



TERMO SALUD es una empresa certificada en calidad y medioambiente por TÜV Rheinland



Fondo Europeo de Desarrollo Regional



RF System by TERMO SALUD



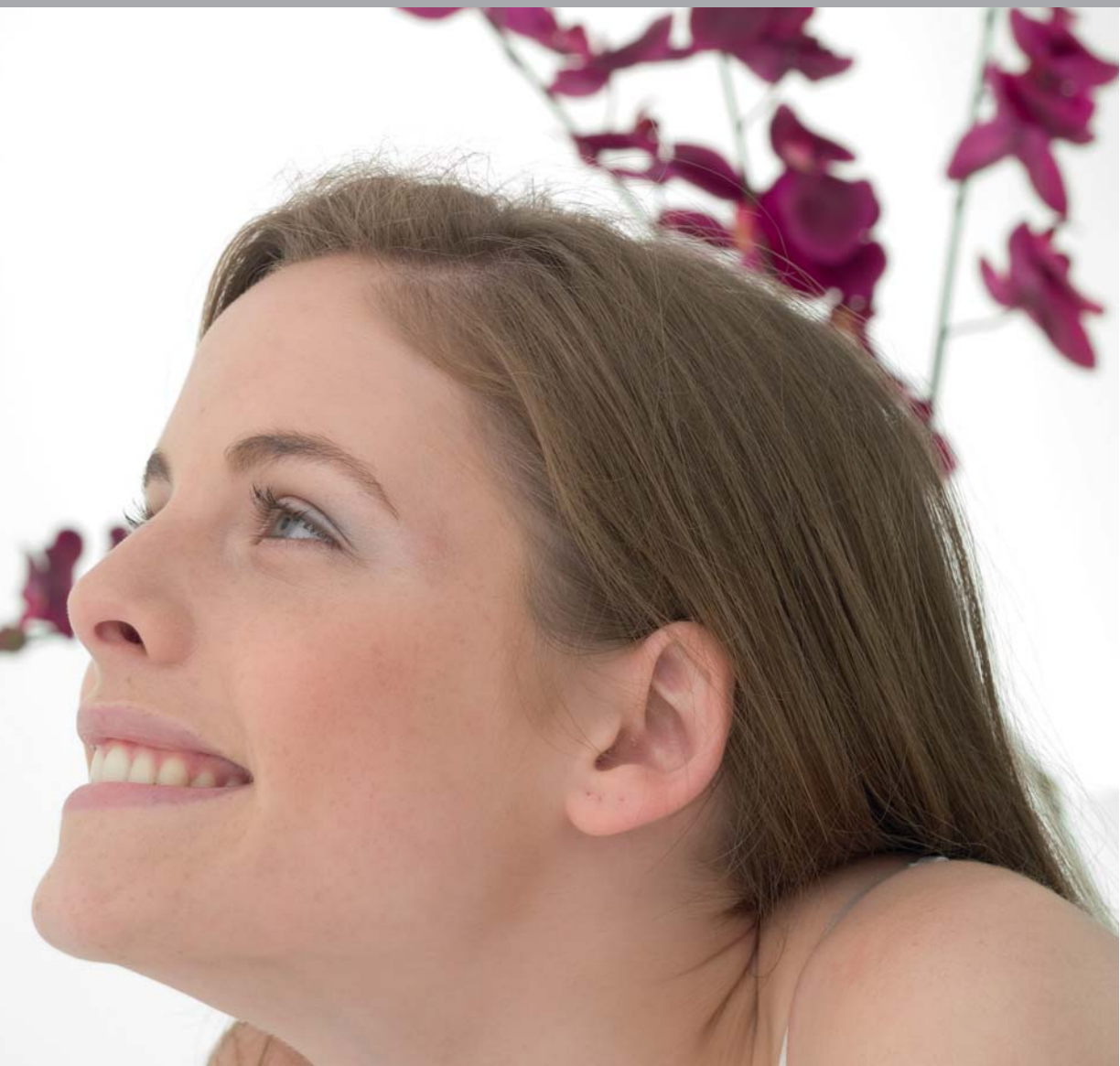
RF System by TERMO SALUD

Radiofrequency RF System™ by Termosalud
A new way of fighting loose skin

grupo BSB



Facial rejuvenation without surgery





A new way of fighting loose skin

What is radio frequency?

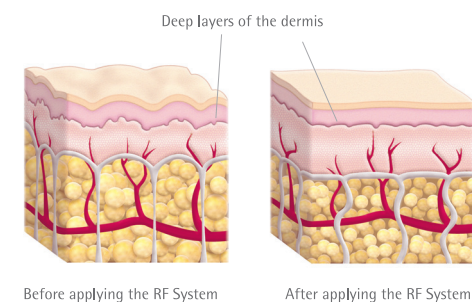
Radio frequency is one of the most important emerging therapeutic innovations with the biggest future that has been developed in recent years.

It is the first non-invasive technique that tightens and stretches skin to the full, obtaining excellent results, giving all the expression, shine and youth back to the face. The best results are obtained on the neck and face although radio frequency treatment is also effective on other areas of the body.

It is a tool that sets the mechanism that puts the brakes on skin ageing into motion and gives results that resemble a face lift by 70%.

How does it work?

The radio frequency equipment allows us to work selectively by applying RF rays deep into the dermis and the under layers of the skin, causing deep and instantaneous hyperthermia and therefore producing a synergic effect that contracts the collagen and the expression of the heat shock proteins, with which the skin starts to repair and remodel this deep collagen, activating the fibroblasts, firming the skin and reducing wrinkles.

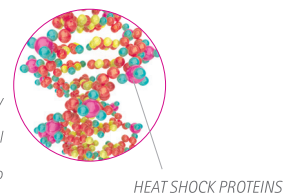


Before applying the RF System After applying the RF System

Bipolar radio frequency works on the deep layers of the dermis, the collagen is restructured by the activation of the HSP heat shock proteins

HSP Heat Shock Proteins

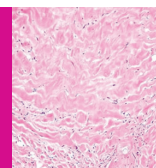
Hormesis is the stimulation of any biological system by small doses of a heat agent. Each stimulus is a live cell that produces activity that is inversely proportional to the intensity of the stimulus (Law of Arnold Schulz, 1888)



HEAT SHOCK PROTEINS

Proteins are formed by the joining of hundreds in chains that fold up to take on a three-dimensional shape. This tertiary shape is what allows the protein to carry out its function.

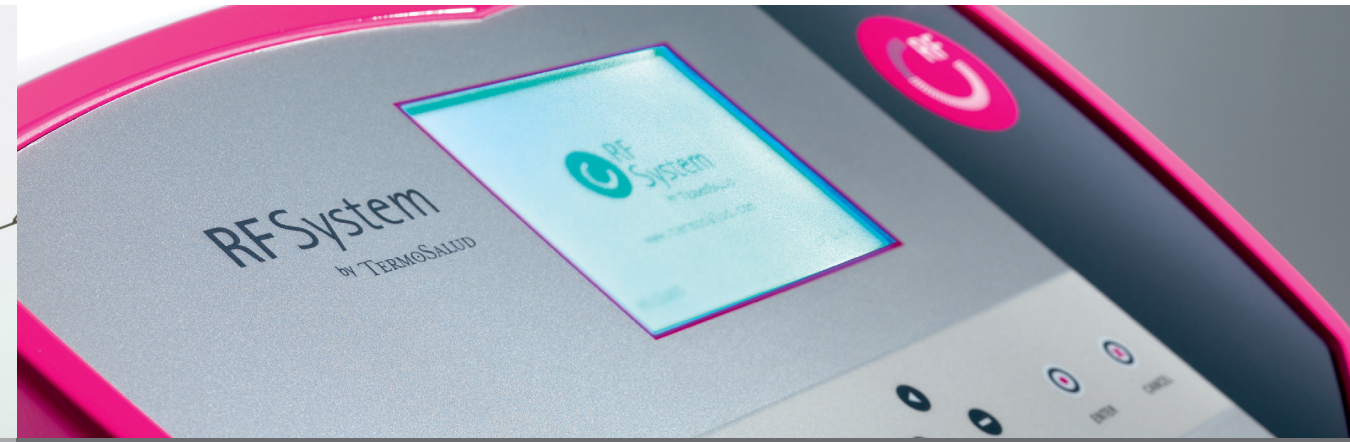
The heat, alters the tertiary shape of the proteins, unfolding the chains of amino acids, and causing the function loss of the protein. The HSP help the cell to break the denaturalised proteins down, marking them out to then destroy them and thereby recover their three-dimensional shape and therefore recover their function.



Collagen

They are the fibres that support the structure of the skin.

With the environmental factors these structures deteriorate and produce the first signs of ageing: wrinkles and loose skin



Facial rejuvenation without surgery



characteristics RF System by TERMO SALUD



It has three specific programmes that adapt to needs depending on the treatment.

The retraction results can be seen almost immediately, but the best results are obtained after 2 or 4 months after the last session, when the result of the loose skin can be seen.

Radio frequency on deep levels of the dermis is suitable for:

- Looseness
- Enlarged pores
- Better nourishment and oxygenation
- Pre and post surgery treatments
- Regeneration
- Anti radical effect
- Stretch marks
- Capillary weakness and mild alopecia



It is a very safe treatment. The clients can return to their normal activity immediately after the treatment. Some people experience a slight reddening of the skin, which disappears quickly.

The number of sessions will depend on the professional criteria and its development, similarly the time used for each application will depend on the size of the surface area to be treated. It is a safe, non-invasive treatment, which is not at all harmful for the skin and does not have any side effects.

Bipolar system: The penetration of the RF energy depends on the shape of the electrodes and the distance between them. The RF System gives the best energy supply from the surface of the epidermis up to 5-8 mm in depth.

Equipment:
| Radio frequency equipment |

Model:
| RF System by Termosalud |

Frequency:
| 1 MHz +/- 5% |

Power :
| From 1 to 10 w |

Outlet energy:
| From 1 to 10 J |

Fluency:
| From 2 to 20 J /²cm |

Minimum application surface area:
| 0,5 cm² |

Power supply voltage:
| 220-240 V 50 Hz 1,5 A |

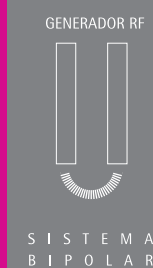
Functioning modes:
| Manual / Continual / Automatic |

Application time:
| From 5 to 45 min. |

Weight:
| 20 Kg |

Dimensions:
| 1400 mm x 500 mm x 400 mm |

Available in the following colours:
| Aluminium | Fuchsia | Blue |



GENERADOR RF
SISTEMA BIPOLAR

